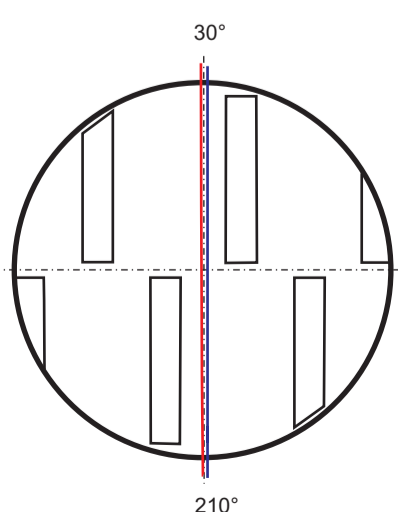
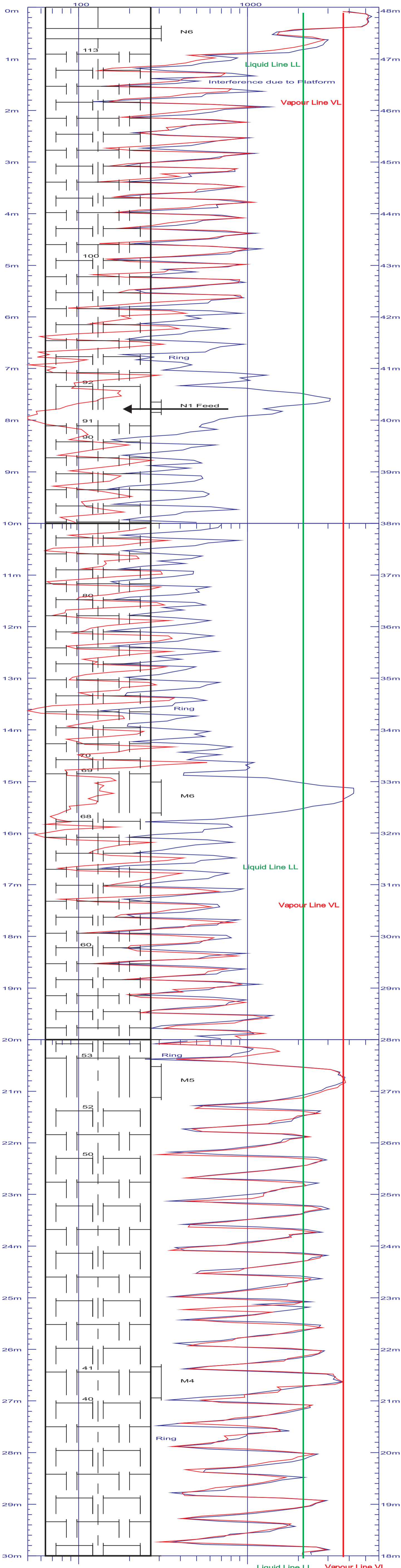


Country : Deutschland
 City :
 Company :
 Titel : C3 Splitter
 VesselNo:
 Scales : 50 - 6000 Counts
 Date : 1. 23.01.01 16:04-18:05

IBE Ingenieurbuero
 Bulander&Esper GmbH
 Gamma-Prozess-Diagnostic
 Tel. +49 6359 949390

2. 24.01.01 14:34-16:32



Column revamp for capacity increase from 100% to 120% using high performance trays. Maximum expected capacity was not achieved. Red scanline at approx. 110% load: Trays 52-113 with low tray space of 305 mm cope with jet-flooding where trays 65-96 were already massive flooded. Blue scanline at approx. 100% load: Operating condition of flooded trays 65-96 improved but they cope still with jet flooding. The trays 52-34 with the larger tray space of 460 mm are working scanline at both loads with moderate to severe liquid entrainment. With this scans it was clear demonstrated that this trays with low tray space of 305 mm were the bottleneck of the column.